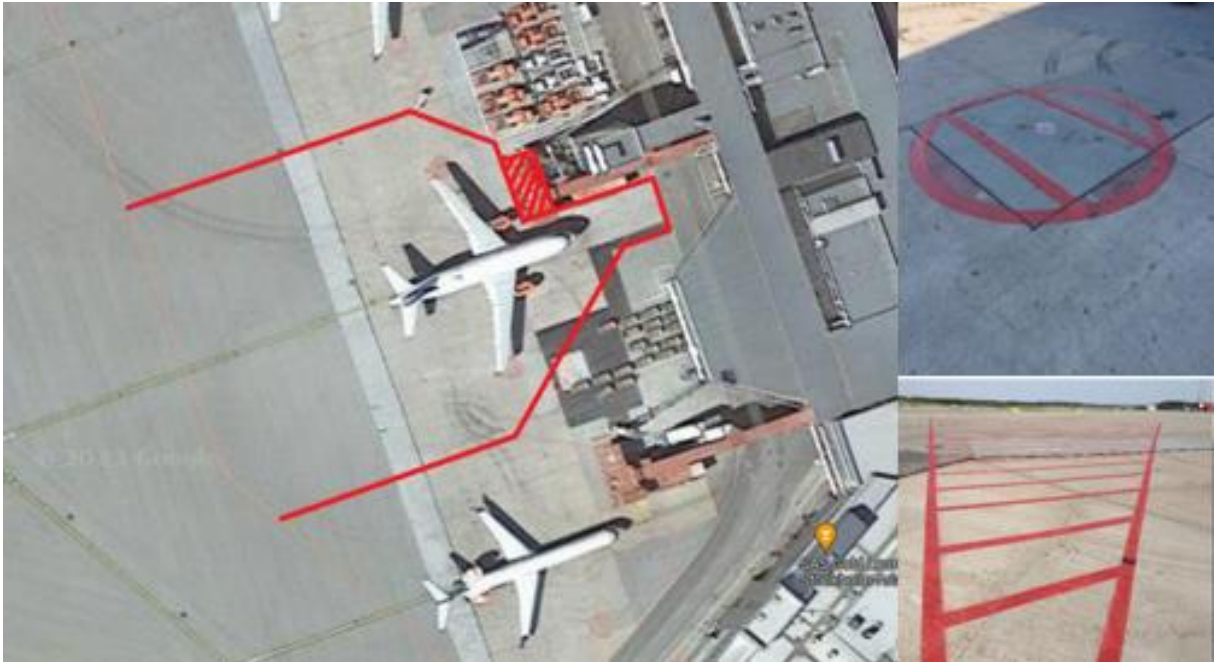


## Red prohibited zone markings



- Within the red prohibited zone, you may **NOT** enter to park or stage vehicles and equipment.
- In the red prohibited zone under passenger boarding bridges, you may **NOT** enter or remain stationary when aircraft are entering parking stands, this applies until aircraft have stopped and anti-collision lights are turned off.

**SAFETY FIRST - Your Priority!**